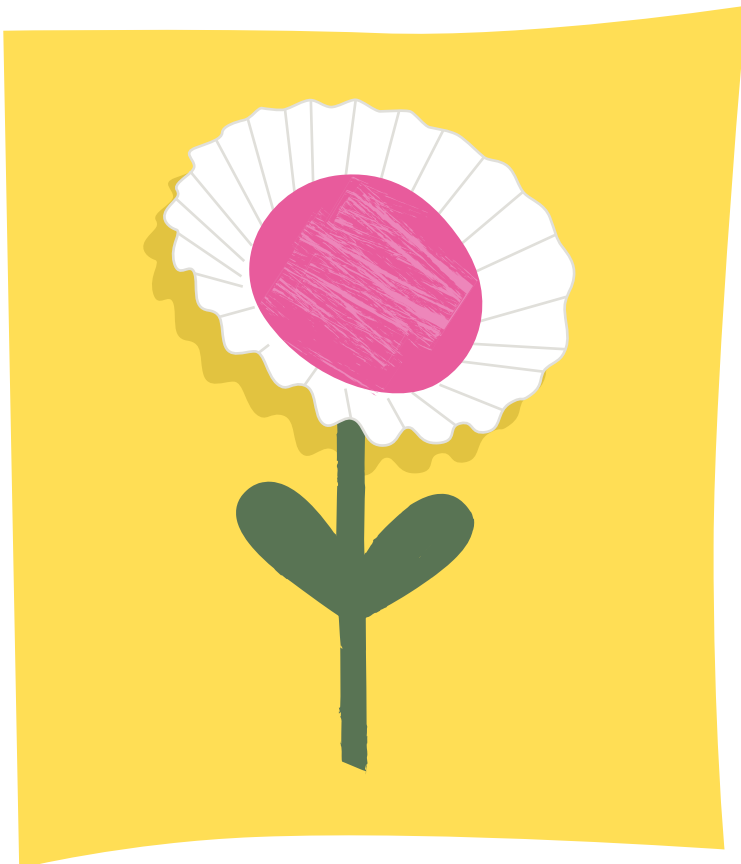




# SPRING COFFEE FILTER FLOWER



## SUPPLIES:



WHITE BASKET COFFEE FILTER



CRAYONS OR MARKERS



CONSTRUCTION PAPER



GLUE STICK



1

START BY FLATTENING OUT A WHITE COFFEE FILTER. USE A BRIGHT COLOR TO COLOR THE CENTER OF THE FILTER COMPLETELY.

2

USE A GLUE STICK TO GLUE THE FILTER CENTER ONTO SEPARATE PIECES OF CONSTRUCTION PAPER.

3

THEN USE A GREEN CRAYON TO DRAW A FLOWER STEM AND LEAVES.

4

YOU CAN MAKE THESE FLOWERS USING ALMOST ANY COLORS YOU LIKE!