

CHERRY BLOSSOM

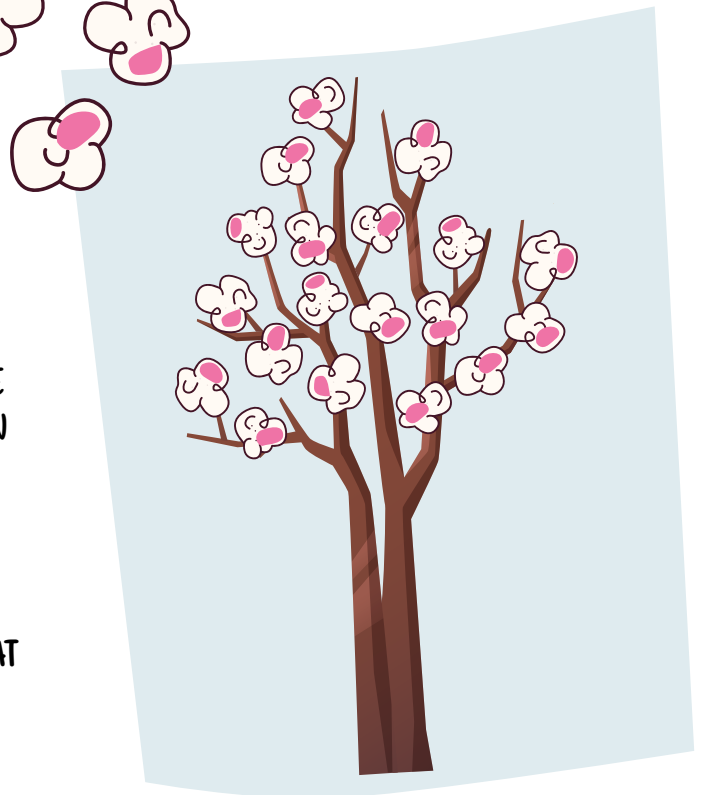
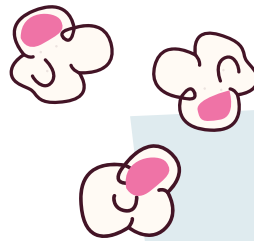
HAPPY SPRING TO ALL OUR BFP KIDS. TO CELEBRATE ALL THE BEAUTIFUL FLOWERS AND COLORS OUTSIDE APRIL'S CRAFT CORNER IS A CHERRY BLOSSOM TREE - WE HAVE A MESSY AND A LESS MESSY VERSION

SUPPLIES:

- PAPER
- PAINT - BROWN AND PINK
- PAINT BRUSHES
- GLUE
- PAPER CUP/BOWL
- UNSALTED/UNBUTTERED PLAIN POPCORN



- 1 POUR SOME BROWN PAINT ONTO A PAPER BOWL OR CUP
- 2 USE A PAINT BRUSH TO PAINT YOUR OPPOSITE HAND AND ARM UP TO YOUR ELBOW,
- 3 OPEN YOUR FINGERS WIDE AND CAREFULLY PLACE YOUR ARM/HANDPRINT ONTO THE PAPER.
- 4 THIS WILL BE YOUR TREE AND BRANCHES - IF YOU PREFER YOU CAN JUST USE THE PAINT TO PAINT A TREE AND BRANCHES. LET THE PAINT DRY.



- 1 POP THE POPCORN - ASK AN ADULT FOR HELP IF NEEDED.
- 2 USE PINK PAINT AND PAINT THE POPCORN - YOU CAN EITHER TAKE YOUR TIME AND USE A BRUSH OR POUR SOME PAINT IN A PAPER BOWL AND ADD A HANDFUL OF POPCORN AND MIX IT AROUND.
- 3 ADD DROPS OF GLUE TO YOUR TREE TRUNK AND THEN ADD YOUR PINK POPCORN CHERRY BLOSSOMS - PRESS DOWN HARD SO THEY STICK TO THE GLUE, BUT NOT SO HARD THAT YOU CRUSH THE POPCORN.
- 4 LET IT DRY COMPLETELY AND DISPLAY YOUR ART.